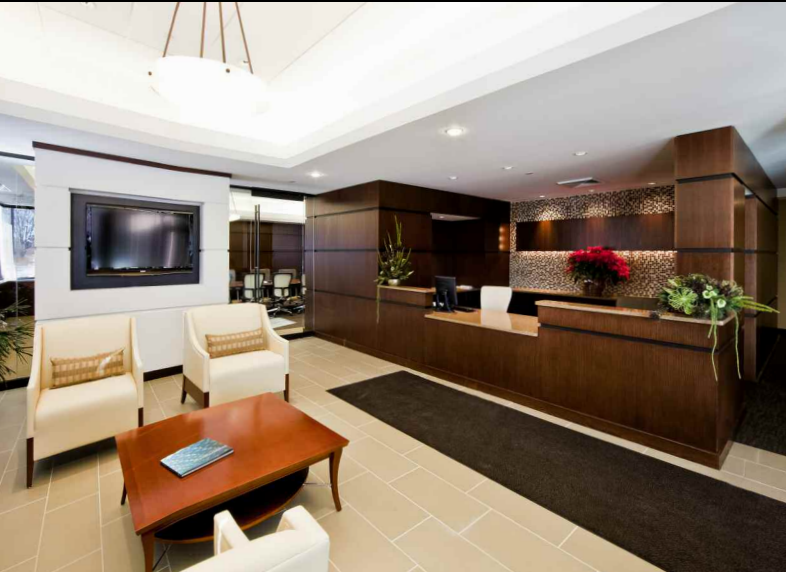


# *restat*

M I L W A U K E E , W I

---



An ambitious **8-week, fast track schedule** was established last fall for the office tenant build-out for restat of Milwaukee. restat, a prescription benefit management firm, moved last November from West Bend to Milwaukee into **34,000 square feet** of recently vacated office space. From the outset of the project, two shifts were employed by **Berghammer Construction** with the initial focus on demolition of existing walls and doors, and the removal of all the existing flooring. Once that was completed, the emphasis for meeting the tight schedule became the electrical installation of lighting, data, and electrical power for **approximately 150 workstations and private offices**.

Restat also did something not seen every day in office build-outs – they installed a large emergency generator outside to provide standby power just in case their electricity went out. Private and executive offices, and hallways, were completely remodeled, **with wood wall panels and millwork** installed throughout the entire reception and waiting areas as well as the adjacent board room.

To see in-progress construction photos, log on to our website at [www.berghammer.com](http://www.berghammer.com) and click on What We Build/Tenant Improvement and Renovation/restat.

#### **Berghammer Project Team –**

Project Executive: **Leif Nesheim**

Senior Project Manager: **John Pszonak, LEED AP**

Project Coordinator: **Beth Tabat**

Project Superintendent: **Royce Neuman**

Tenant Representative: **WillowTree Development**

Landlord: **Liberty Property Trust**

Architect: **Zimmerman Architectural Studios**



**BERGHAMMER**

*Construction Corporation*

4750 North 132nd Street Phone 262-790-4750  
Butler, WI 53007-0918 Facsimile 262-790-4755  
[www.berghammer.com](http://www.berghammer.com)

PRST STD  
US POSTAGE  
**PAID**  
MILWAUKEE WI  
PERMIT NO 5521

R E T U R N  
S E R V I C E  
R E Q U E S T E D

THE RIGHT SIZE. THE RIGHT PEOPLE. THE RIGHT EXPERTISE.